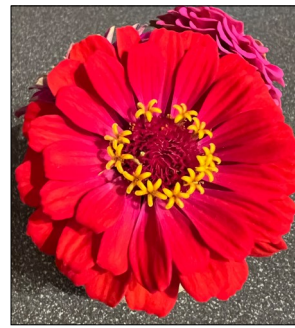


Pay Dirt

HORTICULTURE
September 2024



Cooperative Extension Service
Madison County
230 Duncannon Lane
Richmond, KY 40475
(859) 623-4072
Fax: (859) 624-9510
<http://extension.ca.uky.edu>

Hello Horticulturalists!

Madison County Farmers' Market

Open Saturdays from 9:00 am to 1:00 pm
White Oak Pond Christian Church located
at 1238 Barnes Mill Road in Richmond and
Thursdays at the Carter Building on ECU's
campus from 9:00 am to 1:00 pm. Their
last day at ECU is September 12th.

[https://www.facebook.com/
MadisonKYFarmersMarket](https://www.facebook.com/MadisonKYFarmersMarket)

Berea Farmers' Market

Open Saturdays from 9:00 am to 1:00 pm
at 635 Chestnut Street in Berea.

[https://www.facebook.com/
bereafarmersmarket](https://www.facebook.com/bereafarmersmarket)

Sincerely,

Amanda Sears
Amanda Sears

County Extension Agent for Horticulture
amanda.sears@uky.edu

Visit <https://madison.ca.uky.edu/> and click on
"Program Areas" and then "Horticulture"

SAVE THE DATE!

Farm City Banquet will be held
on **November 11th at 6 pm**
at the Madison County
Extension Office.

Tickets go on sale October 3rd.
More information soon!

●●● Madison County Cooperative Extension Presents: ●●●

FARM, HOME, & GARDEN *Expo*



Activities for
all ages!

- *Workshops
- *Petting Zoo
- *"Ask a Farmer" Station
- *And much more!

Free food!

Learn more about Madison County Cooperative Extension through
our Farm, Home, & Garden Expo! We will have educational
activities, workshops on cooking, beef cutting/butchering,
beekeeping, tending to animals, composting, and more! Free food
will be available from 11AM-1PM for up to 1000 guests!
We hope to see you for a day of family fun and education!

SATURDAY, SEPTEMBER 28TH FROM 10AM-2PM

AT THE MADISON COUNTY FAIRGROUNDS

See next page
for details



We have many workshops, speakers, demonstrations and educational booths for you to choose from. Below is a **tentative** list of what we have to offer, and is subject to change:

Workshops (every 30 mins) on the “This is how we grow stage”

- Sheep Production Basics
- Backyard Fruit
- Honey
- Beef Ribeye Cutting Demonstration
- Local Beef Producer Panel Q & A
- Growing Mushrooms
- Local Food
- Backyard Poultry

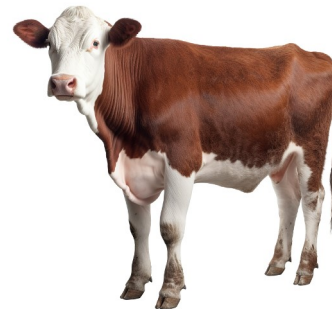


FARM, HOME, & GARDEN

Expo

Interactive Educational Booths

- Ag Weather
- Mushrooms
- Fruit Trees
- Local Foods
- Composting
- Container/Raised Bed Gardening
- Garden Smarter Not Harder
- Gardening As We Age
- Food Preservation
- Ask A Farmer
- Beekeeping
- 4-H Country Ham Samples
- Local Farm Raised Beef Q & A
- Outdoor Cooking
- Forestry
- Soil Sampling
- Good Bug/Bad Bug: Beneficial Insects
- Recipe Demonstrations
- Freeze Drying



Petting Zoo with 4-H Youth Livestock

- Meat Goats
- Sheep
- Beef Calf
- Chickens
- Dairy Goats
- Horse
- Ducks/Duck Slide
- Alpacas



And Much More!